

Art changes educatio changes

Education vision



t
s



Contents

Art changes, education changes	2
Our communities	6
Our curricula	7
Our pedagogy	8



Education vision



Our rapidly changing, globalizing world asks for alternative answers to future questions.¹ Arts provide the space for a critical framework that enables sustainable change. We recognize artists to be drivers of that change. Artistic creativity, innovation and the responsibility to facilitate interaction are their key tools.

¹ ArtEZ University of the Arts strives to contribute to the United Nations' Global Goals for Sustainable Development, in order to care for our planet and each other.

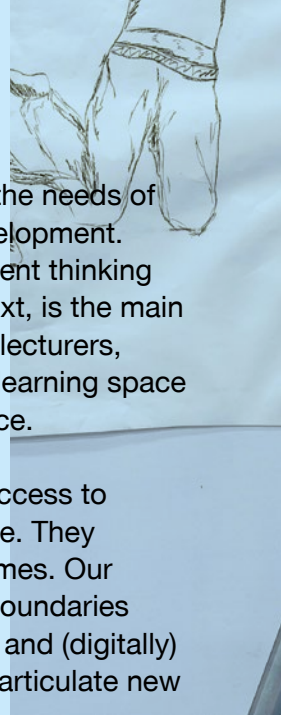


Graduation work, Melanie Maria, BEAR

Art changes, education changes

We will make our education flexible and critical to meet the needs of the students in both their professional and personal development. Building professional competence, developing independent thinking and creating responsible connections in the social context, is the main focus of education at ArtEZ. Engaged in a dialogue with lecturers, researchers and staff-members, students co-create the learning space that gives them the opportunity to develop their own voice.

Our student communities have multiple identities, with access to global platforms for expression, exposure and knowledge. They aim for impact beyond the standard curricula and outcomes. Our future education therefore needs to bridge institutional boundaries between mbo, hbo and universities by flexible programs and (digitally) connected environments. These possibilities push us to articulate new models of learning.



**Arts ask questions,
continuously rephrase
the questions and
provide answers,
even to questions that
have not been asked.**





Photo: Peter Stigter



Students at work during the intro in Zwolle



Work of the Associate Degree Interior Designer, Zwolle



Graduation work Graphic Design Zwolle by Melissa Wolff



Our communities


ArtEZ is a learning community of the Arts. Our diverse education has been ranked as one of the best in the country. Our students are the heart of our University. They are the owners of their learning journey and participants in our governance. They come from different cultures, both nationally and internationally. This calls for multiple contexts in our education.

The learning community at ArtEZ has many different kinds of formal and informal knowledge owners, life-long learners themselves. They bring creativity to the education process, and are professionals in both their educating skills and their artistic work. Researchers are also part of our education, in and outside our classrooms. As they feed our communities with new developments, critical challenges and productive spaces, they prepare our students to encounter the world.

Our students are the heart of our University.



End performance Dance, Jasper van Luijk: In All This Noise | Barely Hear Myself Sing



**Our education
moves beyond
standard curricula.**

Our curricula

We educate our students to engage with their context: to ask questions, to create and have impact. Our stakeholders express a great need for these qualities in our students; ranging from autonomous performers to engaged artist educators. Our education moves beyond standard curricula. We connect our diverse disciplines, and equip our students to be professionals, to develop their own voice and to be resilient in a changing world.

We want our education to be relevant in the full, life-long learning cycle. This also means that our professionals programs include non-traditional participants from other sectors to enhance their practice and create impact.

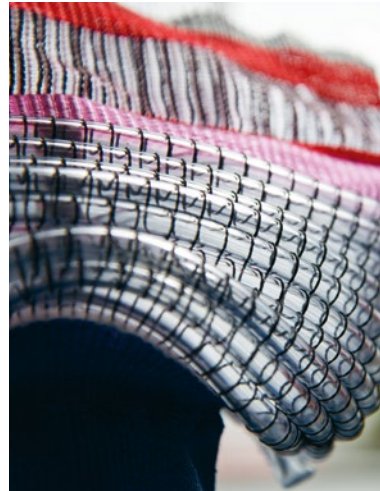
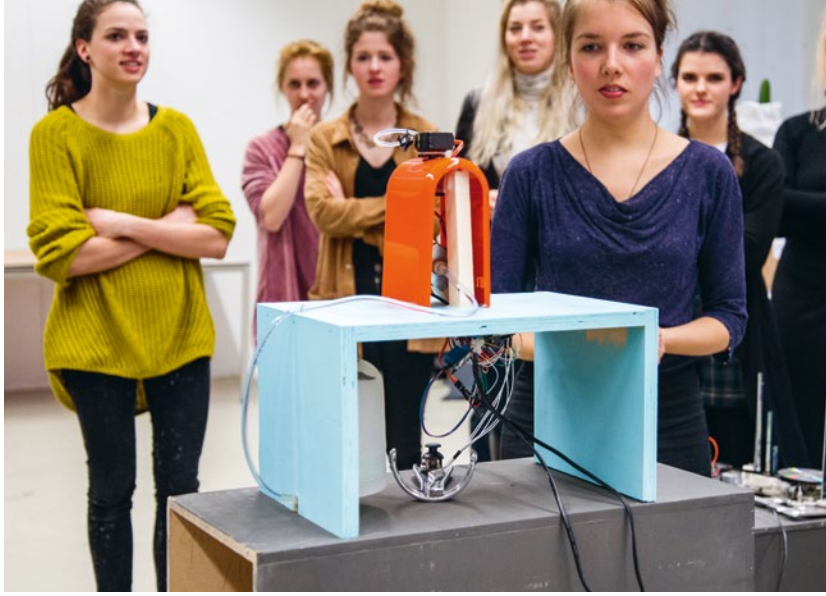
Our pedagogy

Our learning environments are equipped with relevant workspaces to enable the creation process. Technology is one of our tools, both for artistic expression as well as for educational design. We keep on developing our digital infrastructure, also to make the support of our education easier and more efficient.

Our education transcends the transfer of knowledge. Research and education are complementary. We seek new modes of research and inquiry, also outside the university, at unexpected sites, at the edges. These peripheries allow us to constantly rethink the form, format and function of our arts education.

Our education therefore is flexible: it designs and opens up new learning spaces that facilitate learning communities beyond classrooms. At the same time ArtEZ provides a safe space for the learning process of our students, and a community they can come back and retreat to, to strengthen their confidence.

**Our education
transcends
the transfer of
knowledge.**



With special thanks to: Frank Tazelaar, Els Moors

Design: Simons en Boom
November 2019

education changes



artez.nl



Art changes